



CATALOGUE
2025-26



Manufacturing of :
**CNC, VMC TOOLS,
POWER CHUCK & SPARES**



R. R. TOOLS (INDIA)

About us

We have a manufacturing facility in Faridabad which is a prominent and fastest growing region of Haryana (India). We are equipped with latest technology machines and quality control system to produce precise tools of highest standards. R R Tools (India) was established on June 2009.

Introduce ourselves as manufacturers of quality VMC, CNC Power Chuck, Precision Turned Machining and Headed Components.

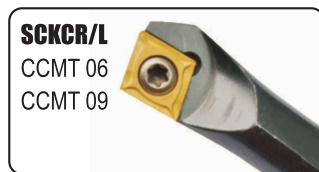
The infrastructure facility is incorporated with several units like design, production planning, quality control, packaging, warehousing, sales and marketing. Our infrastructure also supports us to take bulk demands from our clients and offer customized solutions based on the clients specifications.



Boring Bar



S08H SCLCR/L06	S08H SCKCR/L06	550.00
S10K SCLCR/L06	S10K SCKCR/L06	600.00
S12M SCLCR/L06/09	S12M SCKCR/L06	750.00
S16Q SCLCR/L09	S16Q SCKCR/L09	900.00
S20Q SCLCR/L09	S20Q SCKCR/L09	1150.00
S25R SCLCR/L09	S25R SCKCR/L09	1950.00
S32S SCLCR/L09	S32S SCKCR/L09	2750.00
S40T SCLCR/L09	S40T SCKCR/L09	3550.00
S16/08K SCLCR/L06 15,21,35mm		950.00
S16/10K SCLCR/L06 25,35mm		950.00
S16/12M SCLCR/L06		950.00
S16/12M SCLCR/L09		950.00
S16/14K SCLCR/L09		950.00



S10K SDUCR/L07	S10K SDQCR/L07	850.00
S12M SDUCR/L07	S12M SDQCR/L07	950.00
S16Q SDUCR/L07/11	S16Q SDQCR/L07/11	1550.00
S20Q SDUCR/L11	S20Q SDQCR/L11	1750.00
S25R SDUCR/L11	S25R SDQCR/L11	2200.00
S32S SDUCR/L11	S32S SDQCR/L11	2950.00
S40T SDUCR/L11	S40T SDQCR/L11	3650.00



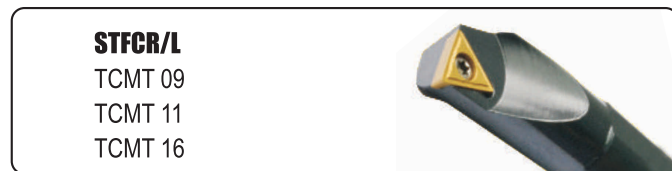
S10H SWUBR/L06-06 10,15,18,21,25mm		
S10H SWUBR/L06-07 10,15,18,21,25mm		
S10H SCLCR 04, 06		
S10H SCLCR 03, 05		
S10K SCZCR/L06		
S12M SCZCR/L09		
S16Q SCZCR/L09		
S20Q SCZCR/L09		



S10K SDZCR/L07	1150.00
S12M SDZCR/L07	1350.00
S16Q SDZCR/L07/11	1750.00
S20Q SDZCR/L11	1800.00
S25R SDZCR/L11	2350.00
S32S SDZCR/L11	3150.00
S40T SDZCR/L11	3950.00
S16Q SDXCR/L 07/11	1750.00
S20Q SDXCR/L11	1950.00
S25R SDXCR/L11	2450.00
S32S SDXCR/L11	3150.00



S16/10K SVXBR/L11	S16/10K SVXCR/L11	1950.00
S16Q SVQBR/L11	S16Q SVQCR/L11	1750.00
S20Q SVQBR/L11	S16Q SVQCR/L11	1750.00
S25R SVQBR/L11/16	S25R SVQCR/L11/16	2200.00
S32S SVQBR/L16	S32S SVQCR/L16	3100.00
S16Q SVUBR/L11	S16Q SVUCR/L11	1750.00
S20Q SVUBR/L11	S20Q SVUCR/L11	1750.00
S25R SVUBR/L11/16	S25R SVUCR/L11/16	2400.00
S32S SVUBR/L16	S32S SVUCR/L16	3100.00



S10K STFCR/L09/11	900/700.00
S12M STFCR/L11	1000.00
S16Q STFCR/L11	950.00
S20Q STFCR/L11	1200.00
S25R STFCR/L11/16	2300.00

M-Clamp Multi Lock System

MCLNR/L

CNMG Tip



MCKNR/L

CNMG Tip

MWLNRL/L

WNMG Tip



S16Q MCLNR/L 09	S16Q MWLNRL/L 06	1900.00
S20Q MCLNR/L 12	S20Q MWLNRL/L 06/08	2100.00
S25R MCLNR/L 12	S25R MWLNRL/L 08	2400.00
S32S MCLNR/L 12	S32S MWLNRL/L 08	3400.00
S40T MCLNR/L 12	S40T MWLNRL/L 08	4550.00

MTQNR/L

+ WIDIA CLAMP
TNMG Tip



MTFNR/L

TNMG Tip



MTUNR/L

TNMG Tip

S20Q MTQNR/L 16	S20Q MTFNR/L 16	2100.00
S25R MTQNR/L 16	S25R MTFNR/L 16	2400.00
S32S MTQNR/L 16	S32S MTFNR/L 16	3400.00
S40T MTQNR/L 16	S40T MTFNR/L 16	4550.00

MVQNR/I

VNMG Tip



MVUNR/I

VNMG Tip

MDUNR/L

DNMG Tip



MDQNR/L

DNMG Tip

S25R MVQNR/L 16	S25R MDUNR/L 11	2400.00
S32S MVQNR/L 16	S32S MDUNR/L 15	3400.00
S40T MVQNR/L 16	S40T MDUNR/L 15	4550.00
S25R MVUNR/L 16	S25R MDQNR/L 11	2400.00
S32R MVUNR/L 16	S32S MDQNR/L 15	3400.00
S40T MVUNR/L 16	S40T MDQNR/L 15	4550.00

Internal Grooving

MGIVR/L

KORLOY Tip



TTIR/L

TaeguTec Tip

STIR/L

Sandvik Tip



S16Q MGIVR/L	S16Q STIR/L	S16Q TTIR/L	2,3,4 mm	1900.00
S20Q MGIVR/L	S20Q STIR/L	S20Q TTIR/L	2,3,4 mm	1900.00
S25R MGIVR/L	S25R STIR/L	S25R TTIR/L	2,3,4 mm	2400.00
S32S MGIVR/L	S32S STIR/L	S32S TTIR/L	2,3,4 mm	3400.00
S40T MGIVR/L	S40T STIR/L	S40T TTIR/L	2,3,4 mm	4100.00

Threading Boring Bar

SINR/L



SINR/L



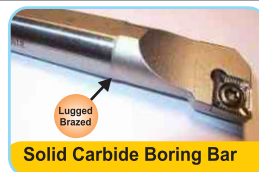
SINR/L 007K08	18, 21, 25mm	2700.00
SINR/L 010 K11	18, 21, 25mm	1700.00
SINR/L 016/13 M16		1700.00
SINR/L 016 M16		1700.00
SINR/L 020 Q16/22		2000.00
SINR/L 025 R16		2400.00
SINR/L 025 R22		2400.00
SINR/L 032 S16/22		3400.00



Carbide Boring Bar

SCLCR/L

CCMT 06/09



STFCR/L

TCMT 11



		OAL	ENTRY DIA	
C08K SCLCR/06		124 mm	9.5 mm	2600.00
C10K SCLCR/L06	C10K STFCR/L09/11	124 mm	11.5 mm	3000.00
C12M SCLCR/L06,09	C12M STFCR/L11	160 mm	13.5 mm	3500.00
C16Q SCLCR/L09	C16Q STFCR/L11	170 mm	17.5 mm	8000.00
C20Q SCLCR/L09	C20Q STFCR/L11	175 mm	22 mm	13000.00
C25Q SCLCR/09	C25Q STFCR/L11	250 mm	28mm	23500.00

Tool Holder

B-Clamp System



BTJNR/L
TNMG Tip

BTJNR/L 2020-K16	1600.00
BTJNR/L 2525-M16	1600.00



BVJNR/L
VNMG Tip

BVJNR/L 2020-K16	1600.00
BVJNR/L 2525-M16	1600.00
BVQNR/L 2020-K16	1600.00
BVQNR/L 2525-M16	1600.00



BVQNR/L
VNMG Tip

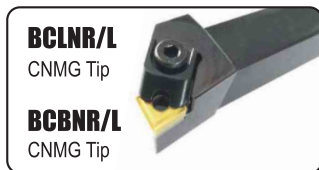


BDJNR/L
DNMG Tip

BDJNR/L 2020-K15	1600.00
BDJNR/L 2525-M15	1600.00



BDPNN
DNMG Tip



BCLNR/L
CNMG Tip

BCLNR/L 2020-K12	1600.00
BCLNR/L 2525-M12	1600.00
BCKNR/L 2020-K12	1600.00
BCKNR/L 2525-M12	1600.00



BCKNR/L
CNMG Tip



BWLNR/L
WNMG 06 Tip

BWLNR/L 2020-K06	1600.00
BWLNR/L 2525-M06	1600.00
BWLNR/L 2020-K08	1600.00
BWLNR/L 2525-M08	1600.00



BWLNR/L
WNMG 08 Tip

M-Clamp Multi Lock System



MTJNR/L
WIDIA Clamp
TNMG Tip

MTJNR/L 1616-H16	1600.00
MTJNR/L 2020-K16	1600.00
MTJNR/L 2525-M16	1600.00
MTQNR/L 2525-M16	1600.00



MTJNR/L
WIDIA Clamp
TNMG Tip



MVQNR/L
VNMG Tip

MVQNR/L 2525-M16	MVQNR/L 2020-K16	1900.00
MVUNR/L 2525-M16	MVUNR/L 2020-K16	1900.00
MVJNR/L 2020-K16	MVVNN 2020-K16	1900.00
MVJNR/L 2525-M16	MVVNN 2525-M16	1900.00



MVUNR/L
VNMG Tip

MVVNN
VNMG Tip



MDJNR/L
DNMG Tip
MWLNR/L
WNMG Tip

MDJNR/L 1616-H11	MWLNR/L 2020-K08	1600.00
MDJNR/L 2020-K11	MWLNR/L 2525-K08	1600.00
MDJNR/L 2525-M11	MWLNR/L 2020-K06	1600.00
MDJNR/L 2020-K15	MWLNR/L 2525-M06	1600.00
MDJNR/L 2525-M15		1600.00
MDQNR/L 2020-K11/15		1600.00



MDQNR/L
DNMG Tip

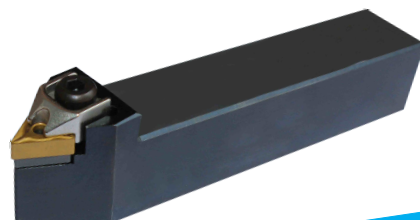


MCLNR/L
CNMG Tip
MCKNR/L
CNMG Tip

MCLNR/L 1616-H12		1600.00
MCLNR/L 2020-K12	MCKNR/L 2020-K12	1600.00
MCLNR/L 2525-M12	MCKNR/L 2525-M12	1600.00



MCBNR/L
CNMG Tip

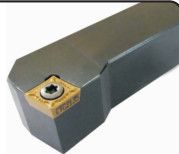


Screw on System

SCLCR/L
CCMT 06,09



SCKCR/L
CCMT 06,09



SCLCR/L 1212-F06	SCLCR/L 1616-H06/09	1600.00
SCLCR/L 2020-K06/09	SCKCR/L 2020-K06/09	1600.00
SCLCR/L 2525-M06/09	SCKCR/L 2525-M06/09	1600.00

SVJNR/L
VNMG 12



SVQNR/L
VNMG 12

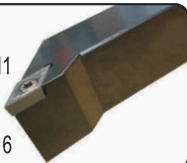


SVVNN
VNMG 12

SVUNR/L
VNMG 12

SVJNR/L 1212-F12	SVVNN 2020-K12	1600.00
SVJNR/L 1616-H12	SVVNN 1616-H12	1600.00
SVJNR/L 2020-K12	SVVNN 2020-K12	1600.00
SVJNR/L 2525-M12	SVVNN 2525-M12	1600.00
SVQNR/L 2020-K12	SVUNR/L 2020-K12	1600.00
SVQNR/L 2525-K12	SVUNR/L 2525-M12	1600.00

SDJCR/L
DCMT Tip 07,11



SVJCR/L
VCMT Tip 11,16

SVJBR/L
VBMT Tip 11,16



SDJCR/L 1212-F07	SVJCR/L 2020-K16	1600.00
SDJCR/L 1616-H07	SVJCR/L 2525-M16	1600.00
SDJCR/L 2020-K11	SVJBR/L 2020-K16	1600.00
SDJCR/L 2525-M11	SVJBR/L 2525-M16	1600.00

SVVBN
VBMT 16



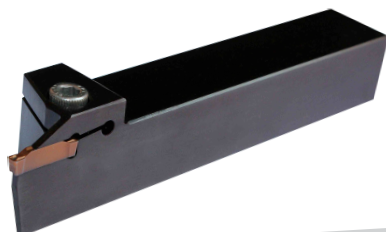
SVUCR/L
VCMT 16

SVUBR/L
VBMT 16

SVQBR/L
VBMT 16

SVQCR/L
VCMT 16

SVVBN 2525 M16	SVVBN 2020 M16	1600.00
SVUCR/L 2525 M16	SVUCR/L 2020 M16	1600.00
SVUBR/L 2525 M16	SVUCR/L 2020 M16	1600.00
SVQBR/L 2525 M16	SVQBR/L 2020 M16	1600.00
SVQCR/L 2525 M16	SVQBR/L 2020 M16	1600.00



External Grooving

Parting & Grooving

MGEHR/L
Korloy Tip



TTER/L
TaeguTec Tip

STVR/L
Sandvik Tip

ISER/L
Iscar Tip

CTVR/L
CERATIZIT Tip
G.S.-16,24mm

KTVR/L
Kenametal Tip

KYOR/L
Kyocera Tip

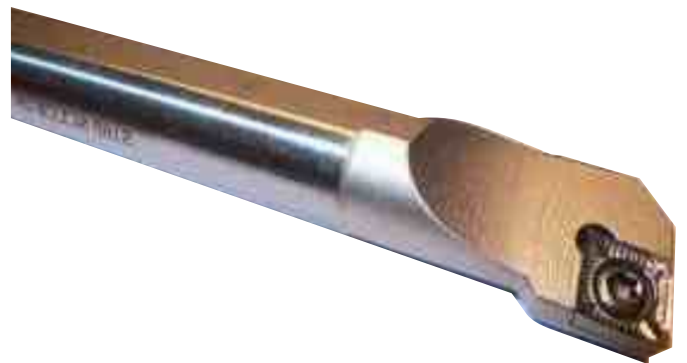
MGEHR/L 2525 / 2020	2, 3, 4, 5 mm	1150.00
TTER/L 2525 / 2020	2, 3, 4, 5 mm	1150.00
STVR/L 2525 / 2020	2, 3, 4, 5, 6 mm	1150.00
ISER/L 2525 / 2020	2, 3, 4 mm	1150.00
CTVR/L 2525 / 2020	2, 3, 4, mm	1150.00
KTVR/L 2525 / 2020	2, 3, 4, mm	1150.00
KYOR/L 2525 / 2020	2, 3, 4, mm	1150.00

Threading Tool Holder

SER/L
16 mm
22 mm



SER/L 1616 H16	ISO	1900.00
SER/L 2020 K16	ISO	1900.00
SER/L 2020 K22	ISO	2300.00
SER/L 2525 M16	ISO	1900.00
SER/L 2525 M22	ISO	2300.00



Accessories



STD. T-Nut

STD. T-Nut 10mm/12mm	550.00
STD. T-Nut 14mm/17mm	550.00
STD. T-Nut 16mm/21mm	700.00
VMC T-Nut 18mm	120.00



VMC-TNut



ER-Collet

ER-/C-Collet ER40 ID-3 to 26	450.00
ER-/C-Collet ER32 ID-3 to 20	300.00
ER-/C-Collet ER25 ID-3 to 15	300.00
ER-/C-Collet ER20 ID-3 to 12	300.00
ER-/C-Collet ER16 ID-3 to 10	300.00
ER-Collet ER11/ER8- ID-3 to 8	300.00



C-Collet



Sleeve

Sleeve OD25-ID-8,10,12,16	600.00
Sleeve OD32/OD40-ID-8,10,12,16,20,25,32	600.00
Sleeve OD42.5/OD50-ID-8,10,12,16,20,25,32,40	900.00
Sleeve OD25-ID-MT1, MT2	800.00
Sleeve OD32/OD40-ID-MT1, MT2, MT3, MT4	800.00
Sleeve OD50-ID-MT1, MT2, MT3, Mt4	1300.00



Sleeve



Spanner

E Spanner-ER-40	C Spanner-ER-40	550.00
E Spanner-ER-32/25	C Spanner-ER-32/25	350.00
M Spanner 11,16	M Spanner 20, 25	300.00
Nut ER-8,11,16,20		300.00
Nut ER- 25,32		300.00
Nut ER- 40		450.00



ER-Nut



Life Centre

Revolving Centre MT-3, MT-4	4150.00	5700.00
MT-4 Bullet	315.00	450.00



MT-4Bullet



Face Mill

VFMR

RD 1003, 12T3, 1204 Tip

VFMR RD 12T3-D063-A22-Z06-H	2400.00
VFMR RD 12T3-D080-A27-Z07-H	3900.00
VFMR RD 12T3-D100-A32-Z08-H	4900.00

VMC Accessories

BT-Collet Chuck



Collet Chuck

BT-SLA



BT-FMB

BT-MT

BT-50 STD. Collet Chuck	BT-50 SLA / FMB	2800.00
BT-50-L100 Collet Chuck	BT-50 L100 SLA / L100 FMB	4200.00
BT-50-L150 Collet Chuck	BT-50 L150 SLA / L150 FMB	4800.00
BT-50-MT1, MT2, M3, MT4		3400.00
BT-40/30 STD. Collet Chuck	BT-40 SLA / FMB	2000.00
BT-40/30-L100 Collet Chuck	BT-40 L100 SLA / L100 FMB	2700.00
BT-40/30-L150 Collet Chuck	BT-40 L150 SLA / L150 FMB	3900.00
BT-40-MT1, MT2, M3,	BT-30-MT1, MT2	2400.00

Cylindrical Collet Chuck



Collet Chuck



Collet Chuck

ER8-D8-L100/150	ER11-D11-L100/150	1450.00
ER20-D20-L100/150	ER25-D25-L100/150	1450.00
ER25-D32-100/L150	ER32-D32-L100/150	1450.00
ER40-D40-L100/150	ER32-D40-L100/150	1450.00

CNC Power Chuck Prices

CHUCK SIZE	2 JAWS CHUCK	3 JAWS CHUCK	4 JAWS CHUCK	DISCOUNT
Ø135MM	24745.00	26745.00	0.00	
Ø170MM	26745.00	28745.00	33745.00	
Ø210MM	30745.00	32745.00	38745.00	
Ø250MM	38745.00	43745.00	54745.00	
Ø315MM	61745.00	68745.00	84745.00	



R. R. TOOLS (INDIA)

Specialist in: Soft Jaws / Tooling for CNC Turning Centres and CNC Vertical Milling
Special Carbide Tooling and all spares & accessories

Qila No. 14/1 (0-13), Dabua Pali Road,
Near Triveni Dharamkanta, Faridabad-121001 (Haryana)

Mob.: 09971271222, 8383863071

E-mail: rrttoolsindia@gmail.com

